



Breathtaking nature

24. Paradise (Painters') Hill
One of the most panoramic places in Sigulda, painted by grands such as J. Feders, J. Rozentāls and V. Purvītis, hence the second name of the place – Painters' Hill. This is the beginning of the trails leading towards the Vējupīte ravine to explore other natural landmarks.
📍 *Sigulda, between Vējupīte ravine and Gauja River valley, 57.1751, 24.8657*

25. Emperor's View and Emperor's Chair
Lookout points with a striking view of the ancient Gauja River valley were created to mark the visit of Russian Tsar Alexander II to Sigulda in the second half of the 19th century. You can continue exploring nature from these locations via a network of trails leading towards the Gauja.
📍 *The Emperor's View Lookout is located 300 m NE of the Fischer Ski Centre, 57.1426, 24.8238. The Emperor's Chair is located 300 m W of the adventure park "Mežakāķis", 57.14273, 24.82391*

26. Gutman's Cave (Gūtmaņa)
The largest grotto cave in the Baltic States and the earliest tourist attraction in Latvia, the walls of which have witnessed many events and preserve inscriptions dating back to the 17th century. It is also the origin of the beautiful story of Turaida Rose, who secretly met at the cave with her beloved Viktors, the gardener of the Sigulda Castle.
📍 *Turaidas iela 2A, Sigulda, 57.1762, 24.8425*

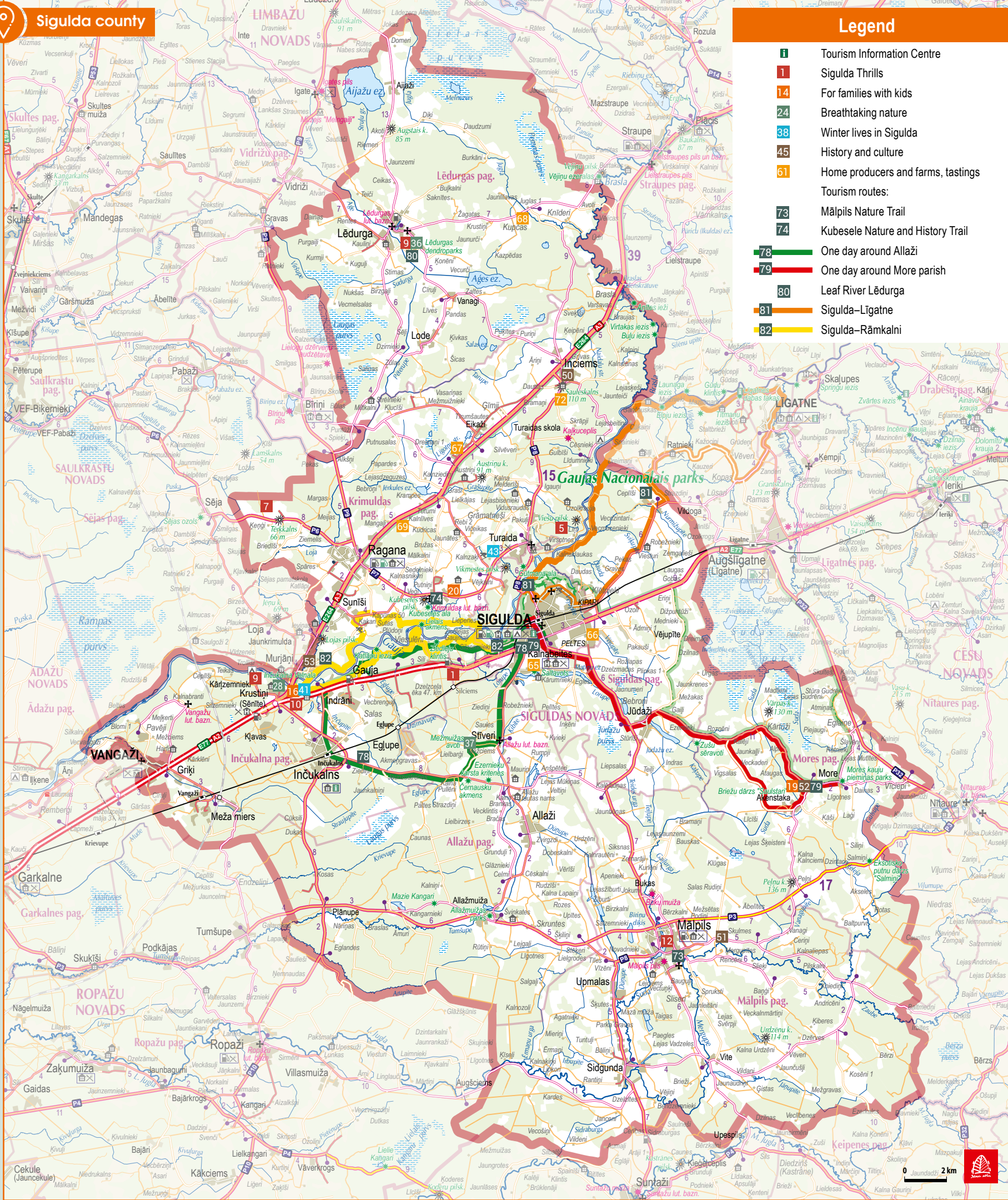
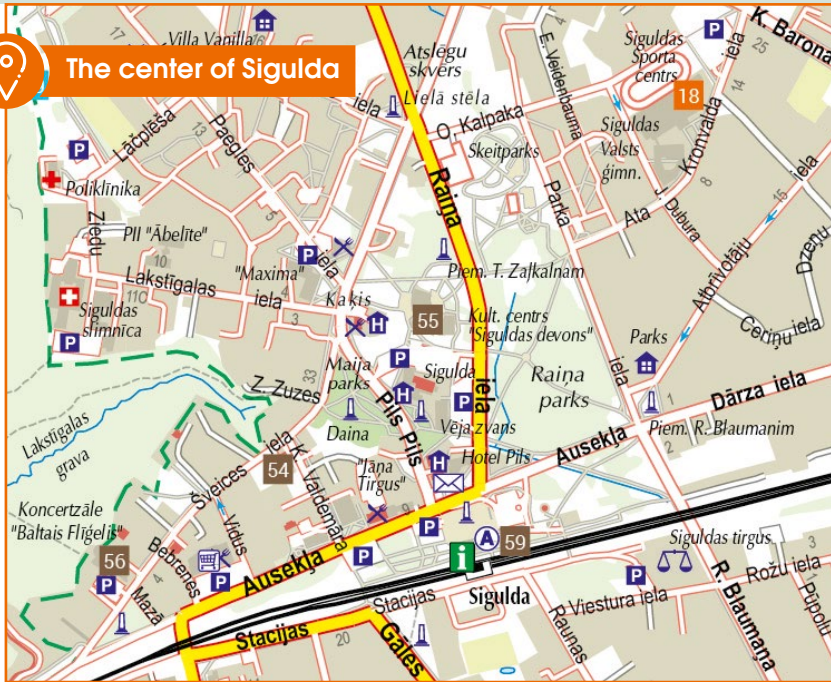
27. Sigulda Devil's Cave
The rocky outcrop of the Devil's Cave is 250 m long and about 15 m high, forming an ancient cult site – the Devil's Cave (or the Velnala in Latvian). It is a protected geological site, best viewed from the opposite bank of the river.
📍 *On the right bank of the Gauja River, 3.8 km from the Sigulda Bridge towards W, 57.1502, 24.8109*

28. Inčukalns Devil's Cave
Inčukalns Devil's Cave (Velnala) is a legend-ary rock that holds many secrets in its dim depths and is said to have once been the dwelling place of the devil. A visit to the cave may be combined with the 3rd section of the long-distance route "Mežtakā", which leads from Vangāži to Rāmkalni.
📍 *Inčukalna pagasts, 57.1268, 24.6384*

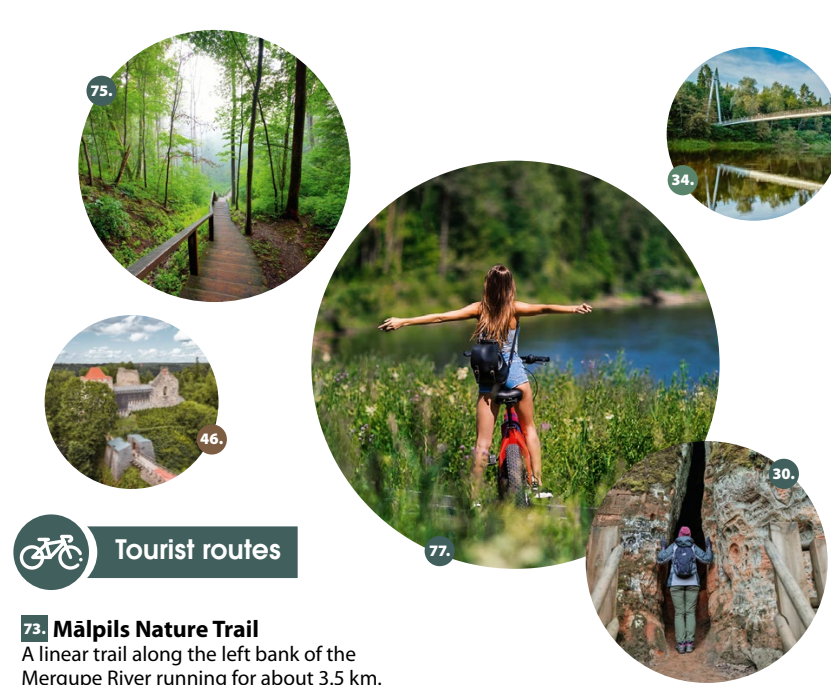
29. Raven's Ravine and Cave
The Raven's Ravine is formed in dark red Middle Devon sandstone and adjacent to it is a small triangular cave, the origin of the name of which is traced back to an old legend.
📍 *Located in Sigulda 400 m SE of the Paradise Hill, 57.1738, 24.8672*

30. Peter's Cave
The visually remarkable Peter's Cave resembles a fissure-like niche in the red sandstone wall and its entrance is only 0.5 m wide.
📍 *Located in Sigulda near the ancient Satešele settlement hill, nestled in the high cliffs on the left bank of the Vējupīte ravine, 57.1715, 24.8769*

31. Satešele Castle Mound and Canyon
Satešele Castle Mound or the Hill of Līvis is a witness of the earliest settlement of Sigulda, the site of fierce battles between



- Legend**
- 1 Tourism Information Centre
 - 14 Sigulda Thrills
 - 24 For families with kids
 - 38 Breathtaking nature
 - 38 Winter lives in Sigulda
 - 45 History and culture
 - 61 Home producers and farms, tastings
 - Tourism routes:
 - 72 Mālpils Nature Trail
 - 74 Kubesele Nature and History Trail
 - 76 One day around Allaži
 - 79 One day around More parish
 - 80 Leaf River Lēdurga
 - 81 Sigulda–Līgatne
 - 82 Sigulda–Rāmkalni



73. Mālpils Nature Trail
A linear trail along the left bank of the Mergupe River running for about 3.5 km. The route passes sights such as Oto Skulmes Oak, Friendship Stone, Mālpils medieval settlement mound, Mālpils and Patriotic War Brethren cemeteries, Skulme Family Site.
📍 *Strelnieku iela 16, Mālpils, 57.0088, 24.9646*

74. Kubesele Nature and History Trail
Approximately 4 km long circular trail through pristine nature, accompanied by the babbling brooks of the Runtiņupīte River and revealing such sights as Kubesele Cave, Saulstari Rock, Big Stone, Rafter's Anchors, and others, including a travellers' cabin with an exhibition "Historical Pages of Krimulda 13th - 19th Centuries".
📍 *Krimulda Evangelical Lutheran Church, Krimuldas pagasts, 57.1636, 24.7687*

75. Three Castles Road Sigulda–Krimulda–Turaida
The most popular one-day route to explore the ancient Gauja River valley on foot and discover the Sigulda Castle Quarter, Krimulda Manor and Castle Ruins, as well as the Turaida Museum Reserve and Castle.
📍 *6 km one way*

76. Hold your breath! From Sigulda Castle Quarter to Vējupīte Ravine
A challenging 10 km circular route for those who are not used to climbing the steep slopes of Sigulda, but it's absolutely worth it to discover truly breath-taking grandeur of nature, wild creeks, sandstone outcrops and caves in the immediate vicinity of the town. Sigulda Castle Quarter, the heart of the city, marks the start and end of the route.
📍 *Pils iela 16, Sigulda, 57.1655, 24.8501*

77. The best viewpoints of the Ancient Gauja River Valley
This 8-15 km route from Sigulda to Krimulda and back includes the most remarkable sights, landscapes and observation spots in the area, such as the Emperor's View, Pīkēne Bluff, Devil's Cave (Velnala) Cliffs and the bridge over the River Gauja. However, you'll need to master the steep slopes and climbs of the Gauja valley terrain to appreciate these sights.

Rental

E-scooter rental
Vidus iela 1, Sigulda, okej@okej.lv, +371 29351672, www.rentinsigulda.lv

Electromobile rental
info@impresso.lv, +371 26171222, www.impresso.lv

Electric bicycle rental "Smart bike"
Jāņa Poruka iela 14, Sigulda, info@smartbike.rent, +371 27776626, www.smartbike.rent

Bicycle, car, boat rental "Okej"
Vidus iela 1, Sigulda, okej@okej.lv, +371 67972747, www.okej.lv

Car rental "KRS noma"
Augļu iela 12, Sigulda, janis@krsnoma.lv, +371 29122042, www.krsnoma.lv

Car rental "2G Projekti"
Bīrmāls, Siguldas pagasts, Siguldas novads, sia2gprojekti@outlook.com, +371 2202117, www.2gprojekti.lv

Car rental "Auto Sigulda"
Vidzemes šoseja 26, Sigulda, autosigulda@inbox.lv, +371 26194714, www.autosigulda.com

Bicycle rental "Reiņa trase"
Kalnāzī, Krimuldas pagasts, administracija@reinatrase.lv, +371 29272255, www.reinatrase.lv

Bicycle rental "Veloriba"
Ausekļa iela 7, Sigulda, sigulda@veloriba.lv, +371 26488507, www.veloriba.lv

Bicycle rental "Ziedlejas"
Ziedlejas, Krimuldas pagasts, info@ziedlejas.lv, +371 26105993, www.ziedlejas.lv

SUP rental "Lakeside"
"Pļivkas", Kalnābeites, Siguldas pagasts, camping@lakeside.lv, +371 27152155, www.lakeside.lv

SUP rental "SUP rent Sigulda"
Purva iela 29, Sigulda, suprentsigulda@gmail.com, +371 29383852, www.suprent.lv

Raft rental
+371 28881385

Boat, SUP, and raft rental "Makars"
Peldu iela 2, Sigulda, karina@makars.lv, +371 29244948, www.makars.lv

Boat and SUP "River Adventures"
Jāņa Poruka iela 14, Sigulda, info@riveradventures.lv, +371 27333300, www.riveradventures.lv

Boat and bicycle rental "Rāmkalni"
Vītiņkalni, Krustpīti, Inčukalna pagasts, andis@ramkalni.lv, info@ramkalni.lv, +371 29100280, www.ramkalni.lv

Boat rental "Laivojam.lv"
Siliņi, Allažu pagasts, info@laivojam.lv, +371 26529812, www.laivojam.lv

SUP rental "Whynotsup"
Rožu iela 8, Sigulda, rikskristens@inbox.lv, +371 29388110

Boat rental "Karlsona laivas"
Upenų iela 8, Sigulda, info@karlsonalaivas.lv, +371 26524203, www.karlsonalaivas.lv

Boat and SUP "Mučas"
Jāņa Čakstes iela 1, Sigulda, info@laivunoma.com, +371 29211634, www.laivunoma.com

Boat rental "Peldam.lv"
Sigulda, Jaunbeites (Rīgas/Velāicenes šosejas 51 km), latroze_laivas@inbox.lv, +371 26666728, www.peldam.lv

Boat and SUP rental "Laivuire.lv"
Ganību iela 3, Peltes, info@laivuire.lv, +371 27594939, +371 28710731 (ENG), www.laivuire.lv

Boat, SUP, raft and catamaran rental "Jaunzāģeri"
Jaunzāģeri, Krimuldas pagasts, info@jaunzageri.lv, +371 22002033, www.jaunzageri.lv

Boat and SUP rental "Baudām dabu laivojot"
Lauku iela 1, Sigulda, info@baudamdabu.lv, +371 28141915, www.baudamdabu.lv



Sigulda and surroundings

More, Mālpils, Allaži, Inčukalns, Lēdurga, Krimulda



Sigulda County Tourism Information Centre
Ausekļa iela 6, Sigulda
www.tourism.sigulda.lv
info@sigulda.lv
+371 67971335
f @Sigulda Aizrauj

Gauja National Park Information Centre
"Gūtmaņa"
Turaidas iela 2A, Sigulda
+371 61303030



© Sigulda County Tourism Information Centre, 2022



Winter lives in Sigulda

36. Fischer Ski Centre
1.25 km long, floodlit, cross-country ski slope, the only artificially iced ski slope in Eastern Europe. Natural snow ski slopes up to 3 km long. A 1.25 km long tarmac circuit is available in summer, perfect for roller-skiing and roller-skating, as well as for jogging, Nordic walking, and cycling. In the service block you will find equipment rental, changing rooms, showers, and a sauna.
📍 *Puku iela 4, Sigulda, 57.1401, 24.8169, fsc@siguldasports.lv, +371 29118847, www.siguldasports.lv*

39. Sigulda City Slope
The Sigulda City Ski Slope is the most athletic, longest, and widest downhill ski slope

in Latvia with 350 m and 200 m long slopes. The vertical drop is 90 m. The slope is used for numerous different races. Equipment rental, instructor services and a café are also available on site.
📍 *Peldu iela 1, Sigulda, 57.1590, 24.8381, spt@siguldasports.lv, +371 25733008, www.siguldasports.lv*

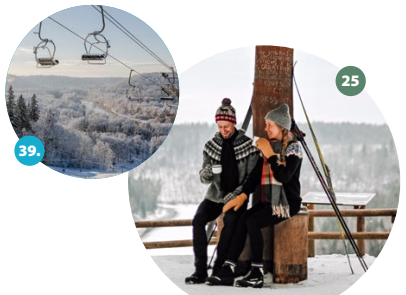
40. Kaķiškalsns
The big slope is 320 m long and is one of the most competitive slopes in Latvia for advanced skiers, while the small 100 m long slope is perfect for children. The vertical drop is 80 m and 10 m. Rental and café are available on site.
📍 *Senču iela 1, Sigulda, 57.1440, 24.8294, info@kakiskalns.lv, +371 67976886, www.kakiskalns.lv*

41. Rāmkalni Ski Slope
The ski slope of Rāmkalni is 200 m long. You can get here instructor services, rental, and dining at the Rāmkalni Bistro.
📍 *"Vītiņkalni", Inčukalna pagasts, 57.1246, 24.6589, info@ramkalni.lv, +371 29100280, www.ramkalni.lv*

42. Kordes Slope
The large slope is 275 m long, the small slope 160 m. The vertical drop is 84 m and 30 m. Equipment rental available.
📍 *Kordes trase, Sigulda, 57.1506, 24.8349, kordeskalns@gmail.com, +371 22345678*

43. Reiņa Track
The "Reiņa Track" is made up of three different slopes – the main slope, the beginners' slope, and the children's park, 50 m, 200 m and 100 m long respectively. Instructor service, rental, café, and accommodation are available on site.
📍 *Kalnāzī, Krimuldas pagasts, 57.1797, 24.8169, administracija@reinatrase.lv, +371 29272255, www.reinatrase.lv*

44. Bobsleigh and luge track "Sigulda"
The only luge track in the Baltics and one of the few in the world where the speed and adrenaline of the track can be experienced not only by professional athletes, but also by tourists – by booking a ride on a winter bob, soft bob ("vuchko") or a tourist attraction nicknamed "the frog".
📍 *Sveices iela 13, Sigulda, 57.1508, 24.8408, +371 29185351, www.bobtrase.lv, info@bobtrase.lv*





S! Sigulda Thrills!

1. Aerodium wind tunnel

"Aerodium" is the first vertical wind tunnel in Eastern Europe. The strong wind flow will make you feel like a bird in the sky. Your childhood dream of flying can come true! ☺ 47th km of the Rīga-Sigulda highway, 57.1334, 24.7864, sigulda.aerodium.lv, +371 28384400, www.aerodium.lv

2. Air Cableway and Zārglis zipline

The oldest cableway in the Baltics stretching 1025 m long and 43 m high above the River Gauja. The scenic ride in the cable car grants you with a magnificent view of the ancient Gauja River valley and the miles of scenery. Adventure seekers can hop on the "Zārglis" zipline, the world's first zipline attraction, which takes you on a ride towards the horizon along an air cableway. ☺ Jāņa Poruka iela 14, Sigulda, 57.1645, 24.8456, +371 28020088, www.cablecar.lv, www.zipline.lv

3. Bungee jumping

The cable car stops right in the middle of the River Gauja, 43 m above the surface, for an unforgettable adrenaline rush. ☺ Jāņa Poruka iela 14, Sigulda, 57.1645, 24.8456, info@siguldaadventures.com, +371 28383333, www.bungee.lv

4. Bobsleigh and luge track "Sigulda"

The only bobsleigh, skeleton, and luge track in the Baltics, and one of the few tracks in the world where, alongside the performance of professional athletes, you too can enjoy the curves as a tourist attraction. ☺ Sveices iela 13, Sigulda, 57.1508, 24.8408, info@bobtrase.lv, +371 29185351, www.bobtrase.lv

5. Sigulda Footballgolf Park

The first 18-cup footballgolf park in the Baltics, surrounded by the picturesque Gauja National Park. Playing footballgolf turns an outdoor walk into a thrilling adventure for the whole family! ☺ "Kraujīņas", Krimuldas pagasts, 57.1927, 24.8718, info@impresso.lv, +371 26022919, +371 26171222, www.impresso.lv

6. Polygon 1 laser tag and Minotaur maze

Laser tag or laser paintball is an active team game which will keep everyone enthralled, and is a great team-building tool, just like the quest game "Breaking out of the bunker". You will find a maze named after the ancient Greek mythological figure Minotaur here too, challenging your logical thinking and orienteering skills over a 714 m distance. ☺ Miera iela 15, Sigulda, 57.1693, 24.8608, +371 20207293, www.polygon-1.lv



For families with kids

14. Adventure Park "Tarzāns"

The largest outdoor adventure park in the Baltics, "Tarzāns" offers all kinds of activities for the whole family – obstacle courses for big and small, chair lift, catapult, giant swings, and children's bungee trampolines, etc. The park has a toboggan track on one of the steepest slopes in Latvia. There is a café, and a downhill ski slope is open in winter. ☺ Piedzīvojumu parks "Tarzāns", Peldu iela 1, Sigulda, 57.1592, 24.8379, tarzans@tarzans.lv, +371 27001187, www.tarzans.lv

- 1 Tourism Information Centre
- 14 Sigulda Thrills
- 17 For families with kids
- 24 Breathtaking nature
- 38 Winter lives in Sigulda
- 45 History and culture
- 61 Home producers and farms, tastings
- 73 Tourism routes
- 76 Mālpils Nature Trail
- 74 Kubesele Nature and History Trail
- 75 Three Castles Road Sigulda-Krimulda-Turaída
- 76 Hold your breath! From Sigulda Castle Quarter to Vajupe Ravine
- 77 The best viewpoints of the Ancient Gauja River Valley

Sigulda



15. Adventure Park "Mežakakis"

Adventure Park "Mežakakis" welcomes you to enjoy adventures along an obstacle course in the woods, split into six different difficulty stages. You will find obstacles at different heights, stretched cables, nets, various bridges, swings, logs, ropes, ladders, and a long ride to catch the wind. There is a café and a downhill ski slope open in winter. ☺ Senču iela 1, Sigulda, 57.1438, 24.8291, +371 67976886, info@kakiskalns.lv, www.kakiskalns.lv

16. Recreation Park "Rāmkalni"

The Recreation Park presents a family amusement with a toboggan track, plus flying chair, tubing, fun bungee, and a children's driving school. You can have a meal at the Rāmkalni Bistro, and buy home-made specialties, bread, and delicacies at the Rāmkalni shop. There is a downhill ski slope in winter and boat and bike rental in summer. ☺ "Vītņkalni", Krustpils, Inčukalna pagasts, 57.1246, 24.6589, info@ramkalni.lv, +371 29100280, www.ramkalni.lv

17. "Klikk" Active Recreation and Entertainment Centre and Go-Kart Track

The largest indoor family entertainment park in Latvia offers the only two-level electric go-kart track in the Baltics, a NERF

playing ground, a net zone with a ball pool, magic blocks and an interactive wall, a skate park, electro-driven models, an indoor children's train, carousels, as well as party and private event rooms and the KLIKk café. ☺ Lauku iela 9, Sigulda, 57.1447, 24.8653, +371 27008090, www.klikk.lv

18. Water Amusement Park

The most family-friendly Water Amusement Park, with a children's water fun corner, two waterslides, three different saunas, a Jacuzzi bath, contrast showers, a cold plunge pool and hydro-massage beds. ☺ Siguldas Sporta centrs, Ata Kronvalda iela 74, Sigulda, 57.1592, 24.8595, sac@siguldasports.lv, +371 25448860

19. Safari Park "More"

The first private deer park in Latvia, operating since 1995. There are more than 500 animals to observe on a 1.5 km walk – fallow deer, red deer, and others. ☺ "Saulstari", Mores pagasts, 57.0787, 25.0577, parks@safariparks.lv, +371 29444662, +371 26539222, www.safariparks.lv

20. Sigulda ZOO

The largest private zoo in Latvia, spread over 11 hectares of the Gauja National Park landscape. Zebras, camels, lemurs, llamas,

alpacas, fallow deer, Highland cattle, Poitou donkeys, rabbits, Valais goats, peacocks, meerkats, and many other animals can be met here. Children's party places, trampolines, electric car track. ☺ Vecīcas, Krimuldas pagasts, 57.16512, 24.78958, info@siguldazoo.lv, +371 28081999, www.siguldazoo.lv

21. "ReWild" outdoor adventures

"ReWild" offers you the chance to go on an adventure with a special backpack and GPS device to explore checkpoints and spend quality time in nature with your family or friends. ☺ rewild.piedzivojumi@gmail.com, +371 26374644, www.go-rewild.com

22. Brīnumu mežs (Forest of Wonders)

A children's and family entertainment centre "Brīnumu mežs" with a wide range of activities in its spacious premises – a three-storey attraction with ball pools, slides, obstacle courses, swings, trampolines, novuss table, Xbox dance and gaming floor, virtual glasses, basketball hoop, and a separate enclosed play area for the youngest visitors (0-3 years). There is a mommies' room available here too. ☺ Pulkveža Brieža iela 111C, Sigulda, 57.1555, 24.8854, info@brinnumezs.com, +371 22352717, www.brinnumezs.com

23. Panorama Wheel and Sigulda Festivity Square

The Panorama Wheel is set in the town's Festivity Square overlooking the breath-taking scenery of the Gauja River valley, Krimulda Manor and the town of Sigulda, creating an unforgettable experience for every city visitor. The Festivity Square was constructed on the occasion of the celebration of the eighth centenary of Sigulda in 2007. ☺ Leona Paegles iela 22, Sigulda, 57.1622, 24.8435, +371 29555882



History and culture

45. Turaida Museum Reserve

The most visited museum in Latvia offers exhibitions on the history of archaeology, culture and art, tracing events from as early as the 11th century. The museum collects a wealth of stories and archaeological artefacts about the Gauja Līvs, the medieval castle and ancient church, the manor centre and Dainu (Folksong) Hill. The events that unfolded in the historical centre of Turaida have strong links with events in Latvian and European history. The Museum Reserve gives visitors the opportunity to go on sightseeing tours with the Museum professionals and take part in educational programmes. ☺ Turaidas iela 10, Sigulda, 57.1866, 24.8472, turaida.muzejs@apollo.lv, +371 67972376, www.turaida-muzejs.lv

46. Sigulda Livonian Order Castle

The construction of the Sigulda Castle of the Livonian Brothers of the Sword began in 1207. Today, seekers of a medieval aura can climb the Northern and Main Gate Towers of the castle and experience the authentic atmosphere of antiquity. The open-air stage in the centre of the castle is the setting for large-scale concerts and festivals, including the International Sigulda Opera Music Festival. ☺ Pils iela 18, Sigulda, 57.1662, 24.8498, siguldas.pils@sigulda.lv, +371 67970263

47. Sigulda New Castle

Built in 1878 by the Kropotkin family, Sigulda New Castle has retained its neo-Gothic exterior, while its interior was turned into a jewel of National Romanticism in 1937. Sigulda New Castle is a national architectural monument, which was considered the most splendid Writers' Castle Manors in Europe back in 1937, following its reconstruction project by architect Alfreds Birkhāns. Today, you can see the unique castle manor interior, artworks, displays, ongoing exhibitions and climb the castle manor's tower. ☺ Pils iela 16, Sigulda, 57.1655, 24.8501, jauna.pils@sigulda.lv, +371 67970862

48. Krimulda Manor

The residence of the princes Lievens was built in 1822 in the Classicist style. The manor complex includes the steward's house, coach house, barn, blacksmith's shop, and the Swiss House with its distinctive and unique carvings. Today, Krimulda Manor is a certified rehabilitation facility, offering accommodation in both hotel and hostel apartments, as well as tastings of berry and flower wines from the local woods and gardens. ☺ Mednieku iela 3, Sigulda, 57.1677, 24.8299, info@krimuldasmuiza.lv, +371 29111619, www.krimuldasmuiza.lv



Home producers and farms, tastings

61. Amber Workshop

Harijs Jākobsons, a third-generation amber artisan, offers to visit his workshop and get to know the processing of the national gemstone, as well as take part in a practical session. ☺ Vēju iela 1, Sigulda, harisjacob@inbox.lv, +371 26185257, dzintaradarbnica.viss.lv

62. Turaida Forge

The blacksmith offers you the chance to see the forged metal and experience the blacksmith's daily life, as well as to craft something as a memento. ☺ Turaidas iela 10, Sigulda, andriscegloms@inbox.lv, +371 29490869, www.turaidassmede.lv

49. Gauja rafter's story

A unique exhibition sits on the banks of the Gauja River in Sigulda, telling the story of an ancient craft included in Latvia's Intangible Cultural Heritage List – timber rafting. On-the-spot you can get to know the history of timber rafting, check out a real tail raft house and its appliances, as well as try your hand at making rafts and other crafts typical of the rafter's job. ☺ Peldu iela 2, Sigulda, 57.1592, 24.8390, +371 29268215, gaujassplotnieks@gmail.com

50. The exhibition of Anšlavs Eglītis

A contemporary and interactive exhibition on the life of the writer Anšlavs Eglītis, as well as a small reading room, featuring almost all the author's works. ☺ Anšlava Eglīša iela 5, Inciems, Krimuldas pagasts, 57.25720, 24.87831, anslavs@sigulda.lv, +371 26752873, www.anslavseglitis.lv

51. Skulme family home exhibition

The memorial room of the sculptor Marta Skulme and the artist Oto Skulme was opened in 1982, followed by a memorial room for the actor Valentīns Skulme. Visits are guided. ☺ "Skulmes", Mālpils pagasts, 57.0145, 24.9944, +371 25451179, +371 25451179

52. The Museum of the Battles of Mōre

The museum's indoor collection is dedicated to the memory of the Battles of Mōre and its major turning points during World War II, as well as household and craft items from the 19th and 20th centuries. There is also an open-air display, including its most noteworthy attraction – the Soviet T-34 tank. ☺ Kalna Kapēni, Mores pagasts, 57.0795, 25.0618, info@moresmuzejs.lv, +371 29446115, +371 26699694, www.moresmuzejs.lv

53. The Imants Ziedonis Museum

The museum's summer residence welcomes visitors to open-air cinema evenings, concerts, storytelling evenings and other events, as well as to the 20 km long (one-way) "Lasīt-taka" (The Reading Trail) route from Murjāni to Sigulda. ☺ Dzirnākmēpi, Krimuldas pagasts, 57.1350, 24.6742, info@ziedonamuzejs.lv, +371 26935526, www.ziedonamuzejs.lv

54. Creative Quarter "Green Villa"

The Green Villa Quarter derives its name from the oldest wooden building in Sigulda, a cultural and historical monument built by the Kropotkin family, which grew into a quarter that today hosts a range of events, bio and design markets, concerts, lectures, daily gatherings of community garden enthusiasts, the GreenFest movement, and Our Bio Market, offering products from local organic farmers, meditation, massages, yoga, etc. There is also

an organic bakery, café, tearoom, and rental apartments, as well as the LIAA Sigulda Business and Co-working space. ☺ Krišjāņa Valdemāra iela 3, Sigulda, 57.1543, 24.8494, zalauskvartals@gmail.com, +371 29175155

55. Sigulda Municipality Culture Centre "Siguldas devons"

After an extensive renovation, the Culture Centre was opened in 2018, taking on a new breath and a new name, recognising the period when the Gauja sandstone was formed, inscribing a magical code for a further jump in development. The facade of the building is ornamented with decorative panels printed with sandstone outcrops from the Devil's Cave (Velna) cliffs, where fossils of Devonian fish and flora are most abundantly preserved. The Cultural Centre presents art exhibitions, cinema, theatre, concerts, and other events. ☺ Pils iela 10, Sigulda, 57.1562, 24.8528, kultura@sigulda.lv, +371 67971280

56. Concert Hall "Baltais flīgelis"

This original structure resembles a musical instrument – a white grand piano with keyboard shaped front windows. The shape of the building symbolises the history of the place because it was here that the composer Alfreds Kalniņš spent his youth summers, and later that the composers Emīls Dārziņš, Emīlis Melngailis and others came to visit. ☺ Sveices iela 19, Sigulda, 57.1529, 24.8450, baltais.fligelis@gmail.com, +371 67974787, www.baltaisfligelis.lv

57. Cinema "Lora"

Three different cinema halls for an exceptionally comfortable enjoyment of the latest movies. Snacks and drinks can be ordered and sipped in comfortable leather armchairs. ☺ Strēlnieku iela 2, Sigulda, 57.1435, 24.8450, birojs@kinolora.lv, +371 67973972, www.kinolora.lv

58. Walking Stick Park

The park was opened as a tribute to Sigulda's most popular souvenir, the wooden walking stick, documented in tourist guides dating as far back as the 19th century. Even today, a visit to Sigulda is unimaginable without buying this symbolic souvenir. ☺ At the intersection of Cēsu and Jāņa Poruka Streets, 57.1618, 24.8495

59. Sigulda Railway Station Square and the Laima Clock

Sigulda's first railway station was built in 1889 and eventually replaced by three more stations. The reconstructed Sigulda railway station and station square were opened in 2012, and the Laima Clock was installed as a symbol of the City of Love. ☺ Ausekļa iela 6, Sigulda, 57.1536, 24.8538

60. Sigulda Castle Quarter and Creative Workshops

Today, craftsmen and artists have set up their workshops and salons in the buildings of the Sigulda Castle Creative Quarter, giving the opportunity to learn new skills and buy souvenirs. ☺ Pils iela 16, Sigulda, 57.1655, 24.8501

- **Jewelry Workshop "Baltu rotas"**

The ornament workshop is a family business that spreads the message of the ancient Baltic tribes by creating both exact replicas of ancient ornaments and

63. "Zilver" Winery

A family-run business, with the entire Zilvers family involved, producing a variety of fruit and flower wines, as well as Allasch Kümmel liquor (Allažu ķimelis). Tastings programme available. ☺ Siltavota iela 33, Sigulda, info@zilver.lv, +371 26159133, www.zilver.lv

64. Kussch Brewery

An independent craft brewery developing new combinations of flavours and aromas, offering a guided tasting tour. ☺ Zinātnes iela 11, Sigulda, info@kusschbrewery.com, +371 26432592, +371 20381828, www.kusschbrewery.com

67. "Zutiņi" Farm

A small family farm that cultivates according to the heart, mind, and values of the ancestors. The farm is proud of its variegated bean collection of over 200 cultivars. Farm tours are available. ☺ "Zutiņi-1", Krimuldas pagasts, info@zutiņi.lv, +371 29148046, www.zutiņi.lv

68. "Mazlauri" Farm

Established in 1993, the farm's cheese is unique in the sense that it is made from freshly milked, unpasteurised, and unfarmed milk of the farm's own goats. Gouda and Taleggio cheeses are made according to Italian recipes and are matured for 2-4 months following traditional methods, at the correct humidity and temperature. Farm tours are available. ☺ "Mazlauri", Lēdurgas pagasts, rehtsprehs@inbox.lv, +371 26424098

69. "Lejaslīves" Farm

Enjoy asparagus in spring and tasty bee products all year round, as well as the "Witches' Frame Factory", a workshop to

incorporating ancient signs and symbols into modern designs. info@balturotas.lv, +371 29295142, www.balturotas.lv

• Textile Workshop

The textile workshop is a unique opportunity to see different weaving looms and learn about the weaving process. In the hands of a skilled craftsman, a yarn thread turns into a woven piece – a scarf, a cushion, a tablecloth, a rug, or a napkin. vannas2012@gmail.com, +371 28942446

- **Aromabreathe Workshop**

Natural cosmetics, herbal baths, herbal teas, and a fragrance workshop where everyone has a chance to create their own scent from natural ingredients. spa@aromabreathe.org, +371 203234783

- **Pienalote**

Branded clothing with added value – jumpers, T-shirts, leggings, dresses, tunics, shoes and more. Screen-printed with eco-friendly textile inks. pienalote@gmail.com, +371 29775909, www.pienalote.lv

- **Paper Art Workshop "Viktor's Letters"**

"Viktora vēstules" Recycling wastepaper to create original paper products – bookmarks, gift envelopes, embellishments, postcards, and special letter paper. zina.ceske@gmail.com, +371 26710184

- **Leather Workshop**

Here you can learn about one of the oldest crafts and design your own special and useful gifts – belts, pendants, bracelets, earrings, etc. marinasigulda@inbox.lv, +371 26442590

- **Ceramics Workshop**

In the pottery workshop you will learn how clay is shaped into a luxurious vase, mug, plate, or other ceramic product. elizabeth@inbox.lv, +371 25932391, +371 26995278

- **Walking-Stick Workshop**

The stick workshop is an invitation to experience the process of making a stick, a process that dates back more than 200 years. The walking stick is the most recognisable and earliest symbol of Sigulda, which evolved with the creation of the valley paths by knyaz Kropotkin, becoming an integral companion of the walker. antra.playgo@gmail.com, +371 29425045

- **Sense Diamonds "Sajūti dimanti"**

Studio where you can spend some fun and creative time with your girlfriends, family, or work mates, make it your hen party spot, crafting jewellery and capturing unforgettable photo moments. Wedding retreat and picnic decoration. sajutidimanti@gmail.com, +371 26341441

- **Cloudberry Design Latvia**

In this studio you are going to find designer papercrafts, planners, sentimental and memory photo albums, educational games for children and gifts for weddings, hen parties. parunasim@makonoga.lv, +371 26110115, www.cloudberry.lv

- **Ksenia Danilova Hat Atelier**

The salon presents the opportunity to check out, buy or order a hat for a special occasion or a fashionable piece for everyday wear. All hats are entirely handmade from high quality materials. www.kseniadanilova.com, +371 20280789, facebook.com/kseniadanilovaofficial

produce beekeeping equipment. Every year on the second September Saturday, the farm welcomes guests to the annual Honey Day at the apiary. Farm tours are available. ☺ "Lejaslīves", Krimuldas pagasts, info@lejaslives.lv, +371 26547371, +371 26564437, www.lejaslives.lv

70. Sigulda Ice Cream

A family-run business created to bring joy and produce ice cream from natural ingredients. At least 10 traditional Latvian flavours – strawberry, cherry, blackcurrant, raspberry, rhubarb, rye bread, cranberry, malt, sea buckthorn, apple, etc., can be tasted in the ice cream café. Tastings and private events programme are available. ☺ Pils iela 16, Sigulda, info@siguldasaldejums.lv, +371 25657998, +371 29395394, www.siguldasaldejums.lv

71. Bliss Gelato

Combining the knowledge of Italian gelato masters and an understanding of ice crystals and pores, Bliss Gelato uses the freshest ingredients to make the highest quality Italian gelato. Tasting programme available. ☺ Livkalna iela 6B, Sigulda, info@blissgelato.com, +371 20208554, www.blissgelato.com

72. "Baīzas" Plant Nursery

You will find the nursery in the Inciems village of the Krimulda municipality, 13 km from Sigulda, 1.5 km from the Inčukalns-Valmiera highway. Everyone is welcome to visit the nursery and get a look at the wide offer of perennials and grasses or buy them. ☺ Lazdu iela 6, Inciems, Krimuldas pagasts, baizas@baizas.lv, +371 26545879, www.baizas.lv